

Down Light-DLT04 Series Spec

Features and Benefits

- Light source: COB LED
- Long LED life: More than 50,000 hours
- Low heat, less than 60°C
- No UV or IR light radiation
- No mercury or other inorganic
- Homogeneous flood illumination
- Machined aluminum heat fins with excellent thermal efficiencies
- The LED down light is available in the following white color temperatures:
2700K/3000K/4000K/5000K/6000K
- 3 or 5 years limited warranty(3 years for Epistar LED chip model and 5 years for Cree LED chip version)
- Works with worldwide lighting systems
110VAC/220VAC

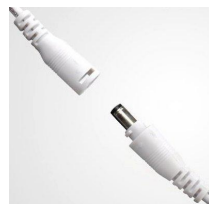


Typical Applications

- Spot lighting
- Retail Store lighting
- Commercial lighting
- Residential lighting
- General lighting
- Energy Saving Programs
- Sustainable Energy



White or Black Housing



DC connector with Lock



Aluminum Heatsink



Lifud /Phililps Brand Driver

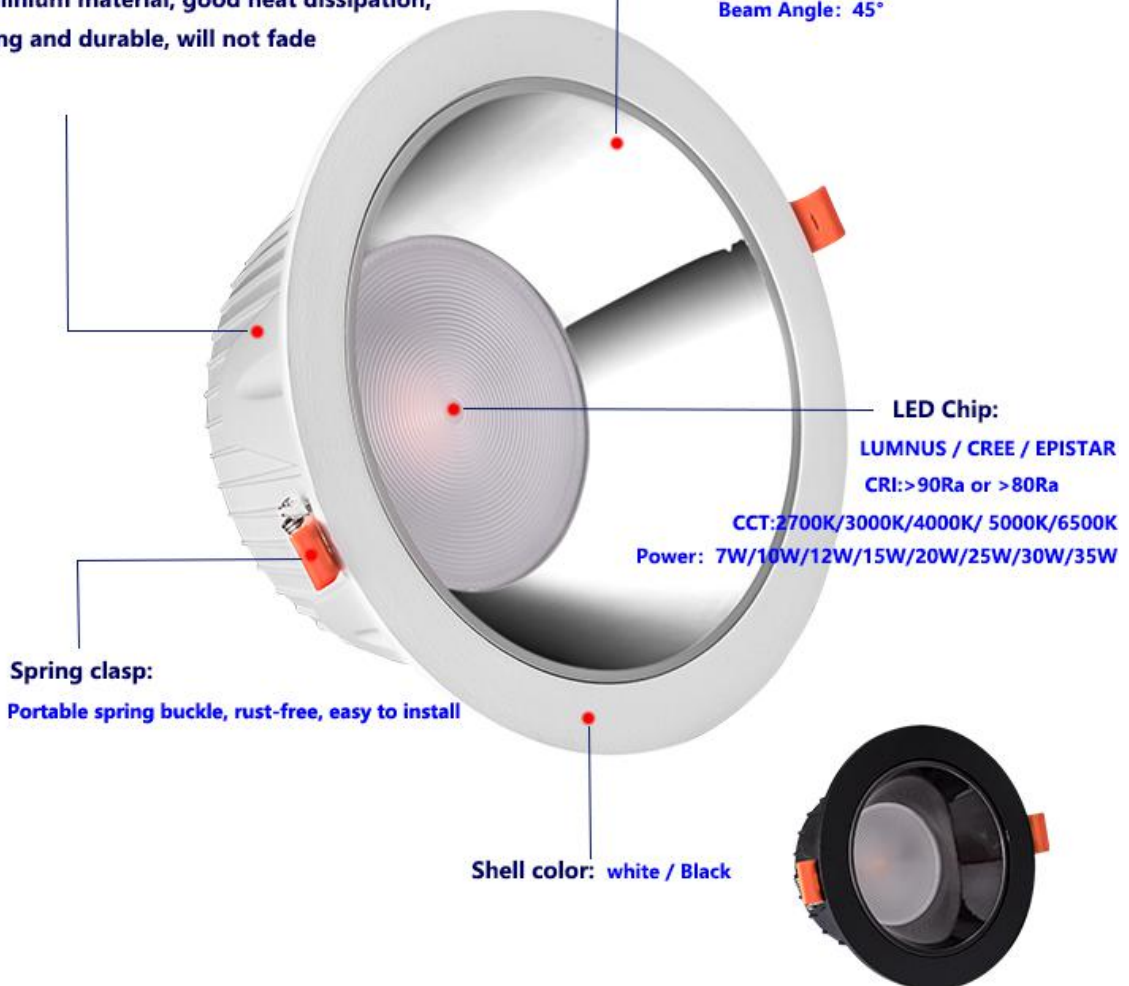
PRODUCT SPECIFICATIONS

LAMP TYPE	Down light series
LIGHT SOURCE	Cree or Epistar COB LED
Power	7W/10W/12W/15W/20W/25W/30W/35W
BEAM ANGLE	45°±3°
RENDERING INDEX (Ra)	>80Ra or 90Ra
Color Temperature	2700/4000/5000K(Cree); 3000/4000/6000K(Epistar)
Efficiency	85-90lm/w for non-dimmable model; 80-85lm/w for dimmable model
OPTICS	Aluminum coating reflector
HEATSINK	Machined pure aluminum with anodize finish
BASE TYPE	External Driver
DIMMABILITY	Dimmable / Non-dimmable Model

Product details

High-quality and thicker precision die-casting aluminium material, good heat dissipation, strong and durable, will not fade

Integrated reflector
Beam Angle: 45°



LED Chip:

LUMNUS / CREE / EPISTAR

CRI:>90Ra or >80Ra

CCT:2700K/3000K/4000K/ 5000K/6500K

Power: 7W/10W/12W/15W/20W/25W/30W/35W

Spring clasp:

Portable spring buckle, rust-free, easy to install

Shell color: white / Black

ENVIRONMENTAL SPECIFICATIONS

TEMPERATURE RANGE Ambient: -20°C to 40°C; Surface of Lamp: 60°C to 70°C

HUMIDITY RANGE 0 to 95% non-condensing humidity

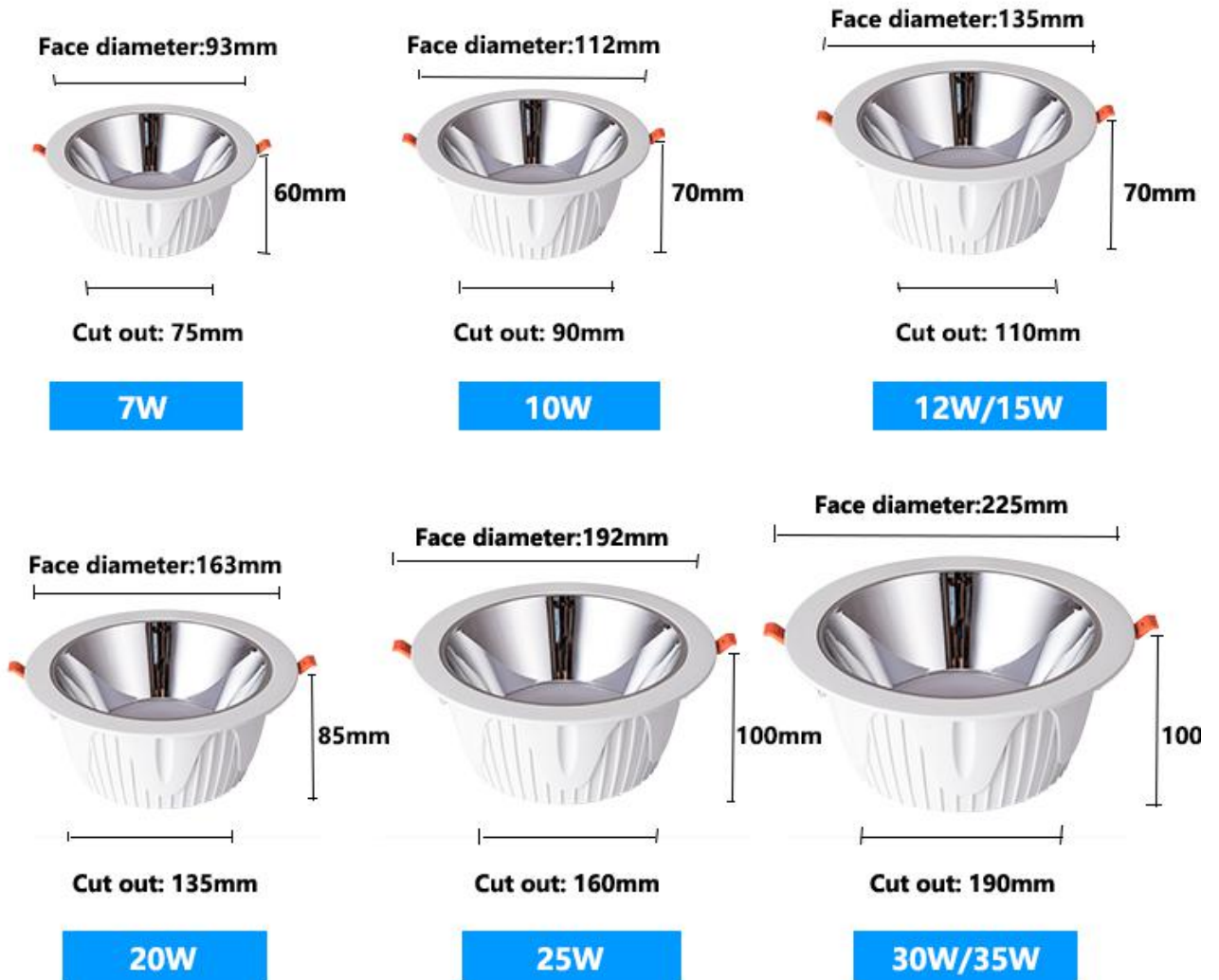
PRODUCT CODE: MF-DLT04-X₁/X₂

X1: Power

X2: LED chip(C-CREE or E-EPISTAR)

PRODUCT SIZE and CUT OUT

Product size



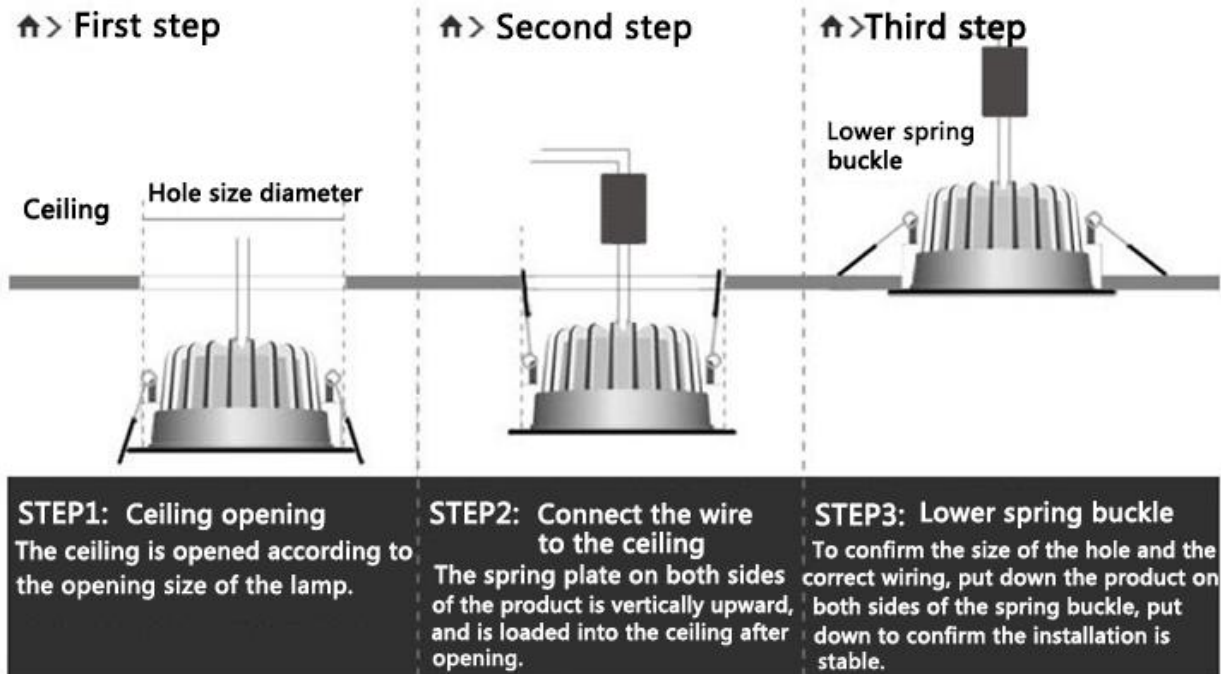
LED Down light Model at Ta=25°

Parameter	Symbol	Min	Type	Max	Unit
Input Voltage (AC)	V _{AC}	90	110/230	240	V
Estimated Life ^[1]		—	50,000	—	hours
Optimized Body Temperature (@35W)	T	—	55	60	°C

Note[*] – Manufacturer projects Down Light made with COB LED to maintain an average of 70% lumens maintenance after 30,000 hours. This estimation is made based on data from LED manufacturer

INSTALLATION DIAGRAM

Use installation instructions



Standard Export packaging

